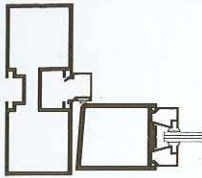


200 Narrow Stile Doors



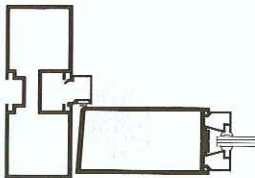
Stiles: 2¹/₈"
Top Rail: 2⁷/₈"
Bottom Rail: 3⁵/₁₆", 10"

MAXIMUM SIZE:
4' Width x 8' Height



Designed with slim-line beauty and engineered for strength in moderate traffic areas. A quality, yet economical door offered with maximum security locks and a wide choice of hinging and other hardware options. The 200 door will ensure years of durable use.

351 Medium Stile Doors



Stiles: 3¹/₂"
Top Rail: 3⁵/₁₆"
Bottom Rail: 6", 10"

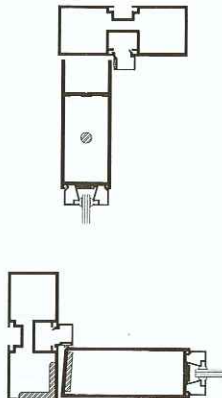
MAXIMUM SIZE:
4' Width x 9' Height



Engineered for extra strength in high-traffic locations such as schools, supermarkets and institutions. Handsomely designed and well-suited to standard and custom hardware applications.

XP Reinforcement

CMI Architectural offers an optional "XP" steel reinforcement package for all series doors. A 3/8" diameter steel tie rod reinforces the top and bottom rails providing added strength protection from racking and twist. Hinging reinforcement is strengthened by a continuous 3/16" steel bar in the hinge stile of the door and a continuous 3/16" thick structural steel angle in the frame.



Specifications for 200, 351 & 452 Doors

DESCRIPTION

Furnish and install aluminum entrance materials based upon the series 200, 351 or 452 doors as manufactured by CMI Architectural Products, Inc., DeSmet, SD.

PERFORMANCE

AIR INFILTRATION: Shall be tested in accordance with ASTM E 283 at a pressure differential of 1.567 P.S.F. A single 3'-0" x 7'-0" door and frame shall not exceed .50 CFM per lineal foot of crack. A pair 6'-0" x 7'-0" doors shall not exceed 1.0 CFM per lineal foot of crack.

MATERIAL

Extrusions shall be AA 6063-T5 alloy and temper (ASTM B221 Alloy G.S. 10A-T5). Extrusion walls shall be a minimum 0.125" thick and 0.188" thick on the 400HD & 500HD doors. 400HD & 500HD door stiles and rails shall be 2" deep. Fasteners shall be stainless or zinc plated steel in accordance with ASTM A 164. Glazing gaskets shall be E.P.D.M., elastomeric or neoprene. Door stop weathering shall be wool pile and easily replaced by use of "snap-in" door stops.

FABRICATION

Corner construction shall consist of a heavy extruded aluminum block, fastener applied and structurally welded at all four corners. Doors shall be prepared for hardware by the use of computerized CNC milling equipment for accuracy and consistent fit. Glass stops shall be square cut and pre-fit into the opening.

HARDWARE

See page 7 or consult the CMI sales office for appropriate hardware selection.

FINISHES

See page 15 or consult the CMI sales office for appropriate finish selection.

Specifications for "XP" Reinforced Doors

I GENERAL

Drawings and specifications are based on "200 XP", "351 XP" or "452 XP" doors as manufactured by CMI Architectural Products, Inc., DeSmet, SD.

II PRODUCT

Doors and frames shall be AA-6063-T5 alloy and temper. Major wall sections of door extrusions shall have a minimum 0.125" nominal thickness. Door corners shall be mechanically joined with solid corner blocks and structurally welded. Top and bottom rail sections shall be internally reinforced with 3/8" diameter steel tie rods. A continuous 1³/₈" x 3/16" steel bar shall be mechanically anchored to the door hinge stile. The hinge jamb of the door frame shall be reinforced with a continuous 1¹/₂" x 1¹/₄" x 3/16" steel angle. All steel reinforcement shall conform to ANSI/ASTM A36.

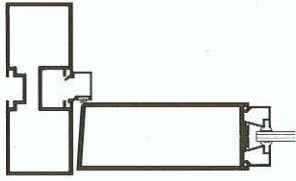
III EXECUTION

All steel reinforcement shall be factory installed. Entrances shall be field installed in compliance with the manufacturer's instructions and approved shop drawings.

CMI Architectural

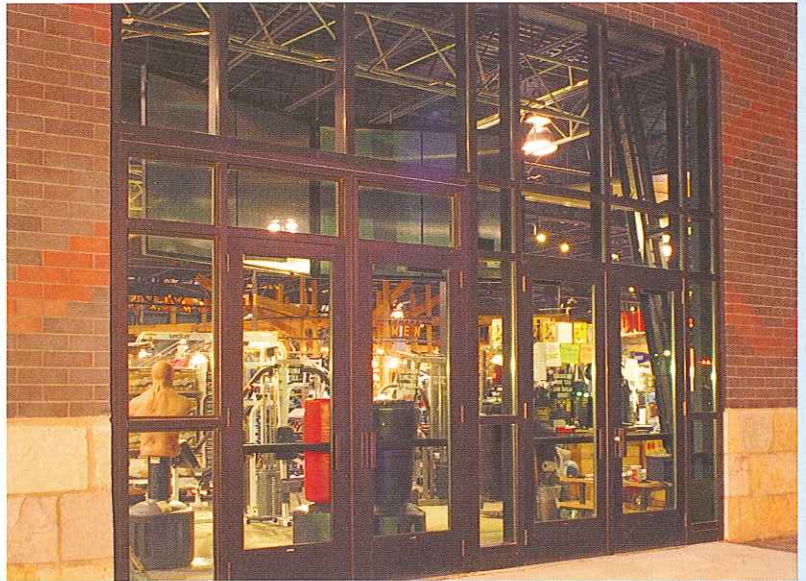
www.cmiarch.com

452 Wide Stile Doors



Stiles: 4½"
 Top Rail: 4½"
 Bottom Rail: 6", 10"

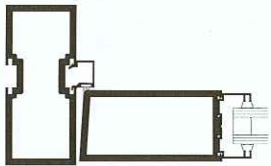
MAXIMUM SIZE:
 4' Width x 9' Height



Elephant Doors

Wide stiles create a bold look and provide the needed strength for schools, banks and libraries. The 452 door withstands many years of high traffic and rough use. Corner construction consists of mechanically anchored shear blocks and structural welds. Beauty, strength and value sets this door apart from the competition.

400HD & 500HD Heavy Duty Doors



	400HD	500HD
Stiles:	4"	5"
Top Rail:	4"	5"
Bottom Rail:	6"	6"

MAXIMUM SIZE:
 4' Width x 9' Height



Auto Showroom Doors

Monumental appearance and superior strength describe this door and frame for use in areas of high traffic and abnormal abuse. Doors and Frames are fabricated using tubular members with 3/16" walls. The doors are 2" deep and are available in a medium or wide stile series.



Monumental Entrances