

EFCO Standard Hardware

LOCKING HARDWARE



DEAD BOLT LOCK

Features

- Designed for aluminum entrances
- Five-ply laminated steel bolt with concealed hardened steel pin provides maximum security for any single leaf door
- 1½" backset is standard
- Accepts all standard 1½" mortised cylinders or thumb turns from either or both sides
- Key removable only in the positively locked or unlocked position
- Cylinder and thumb turn shown optional

Application

- Single door or active leaf on pair of doors

Finish

- Clear and bronze anodized



HOOK BOLT LOCK

Features

- Same as deadlock except with hook bolt or door jamb
- Hook bolt engages into inactive door stile for additional security
- Cylinder and thumb turn shown optional

Application

- Single door or active leaf on pair of doors for extra security

Finish

- Clear and bronze anodized



LATCH LOCK

Features

- Cylinder key operated from exterior
- Lever, thumb turn, or paddle operated from interior
- Latch bolt is ⅝" x 1" x ½" and made from zinc alloy with delrin plastic insert for quiet strike latching
- Auxiliary bolt deadlocks latch bolt to prevent jimmying open with knife or other objects
- Field reversible
- Accepts standard 1½" mortised cylinders or thumbturns
- Reverse turn of the key (while bolt is retracted) retains the latchbolt to allow two-way traffic
- Cylinder and lever shown optional

Application

- Can be used on all EFCO series doors

Finish

- Clear or bronze anodized aluminum



MORTISE LOCK CYLINDER

Features

- Standard 1½" diameter mortised cylinder with five pins
- Furnished with standard ¾" cylinder ring and standard cam
- Cylinder designed to operate by key or thumb turn or furnished blank

Application

- Use with standard deadbolt, hookbolt or latch locks

Finish

- Cylinder face available in either anodized satin aluminum or bronze; core face, thumb turn, and key have US26D finish



FLUSH BOLT

Features

- Mortise flush bolt for aluminum doors
- Radius face with spring loaded lever mechanism
- Comes with bolts
- Standard pair of doors include top and bottom flush bolt in inactive door leaf providing two-point locking
- Active leaf locks into inactive leaf
- Zinc die cast face and mechanism

Application

- Use on inactive leaf on any pair of doors

Finish

- Clear or Bronze anodize



2-POINT and 3-POINT LOCKS

Features

Two-Point (threshold bolt)

- Adds security to single or pair of doors when added to standard deadlock
- Deadbolt locks into inactive door stile or jamb while hardened-steel hex bolt simultaneously locks into threshold
- One key turn secures entire door entrance

Three-Point (header bolt)

- Adds third locking point to top of inactive door when used in conjunction with deadlock and threshold bolt
- One key turn locks all three points simultaneously

EFCO Standard Hardware

LOCKS HARDWARE



LEVER HANDLE

Features

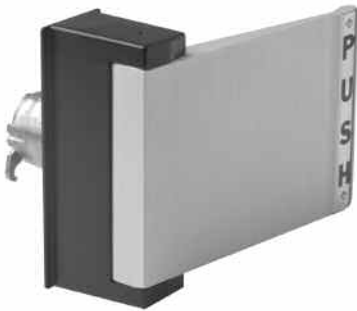
- Designed to operate latch lock
- Slight downward turn of lever handle retracts the latch for quick and easy door opening
- Cam plug located at end of projecting spindle actuates deadlatch
- Non-handed

Application

- Used with narrow stile latch lock

Finish

- Zinc die cast in clear or bronze paint



LATCH PADDLE DEVICE

Features

- Designed as alternative to knob or lever handles
- Slight push or pull in the direction the door swings retracts the latch for quick and easy door opening
- Secured to door stile with special binder posts
- Extruded aluminum alloy paddle - escutcheon is zinc die cast
- Total width of paddle and escutcheon 5" - height is 4.060"
- Cam plug located at end of projecting spindle actuates deadlatch
- Available in four handing modes: push to right - push to left - pull to right - pull to left

Application

- Use with latch lock as alternative to lever handle

Finish

- Clear or bronze anodized



EXIT INDICATOR

Features

- Provides visual notification of locked or open condition
- Zinc alloy indicator escutcheon

Application

- Some local building safety codes allow use in certain occupancies of security deadlock instead of less secure panic device

Finish

- Clear or bronze anodized



EFCO Standard Hardware

ULTRALINE™ HARDWARE

PUSH/PULL



ULTRALINE™ PUSH/PULL SET

Features

- 1" diameter solid wire push bar
- Offset pull is 9" center to center, has an overall offset of 4 3/4", and projects 2 1/2" from face of stile
- Straight pull is 9" center to center and projects 2 1/2" from face of stile
- Securely attached by concealed screw studs

Application

- For use with single-acting doors only

Finish

- Clear or bronze anodize, US32 Bright Stainless Steel, US32D Satin Stainless Steel

Express Finish

- Clear or bronze anodize only



ULTRALINE™ PUSH/PUSH SET

Features

- 1" diameter solid wire push bar
- Back-to-back mounting
- Projection of interior and exterior bar is 2 1/4" at lock stile
- Push bars taper to hinge stile where projection is only 1"
- Securely attached by concealed screw studs and thru-bolt mounting

Application

- For use with double-acting doors only

Finish

- Clear or bronze anodize, US32 Bright Stainless Steel, US32D Satin Stainless Steel

Express Finish

- Clear or bronze anodize only



ULTRALINE™ OFFSET PANIC PULL

Features

- Standard 1" diameter solid wire pull, 9" center to center, with overall offset of 4"
- Projects 2 1/2" from face of stile
- Securely attached by concealed screw studs
- Optional thru-bolt mounting available

Application

- Available as optional pull handle for panic device doors

Finish

- Clear or bronze anodize, US32D satin stainless, and US10B oil-rubbed bronze

Express finish

- Clear or bronze anodize only

EFCO Standard Hardware

PANIC HARDWARE



MIDRAIL PANIC

Features

- Midpanel exit device built into door, reducing loss of clear opening space while improving sightlines and aesthetic appeal
- Top and bottom locking rods completely concealed in door stile, eliminating removable mullion obstruction at pairs of doors
- Hardened-steel latches and adjustable strike assure safety, security, and quiet operation
- Depressing midrail bar unlocks device and permits egress without key
- Bolt re-engages strike and locks from exterior when door closed
- Panic can be deactivated (dogged down) with allen screw in active housing or by key cylinder
- If key cylinder required, Schlage 20-001 X 1½" length (B502 -191 tail or equal) X 1½" diameter mortise cylinder must be used
- Standard 4¼" high and optional 7" high midrail heights available
- UL 305 listed Grade 1 exit device listing of the 2001 revisions ANSI 156.3

Application

- Can be used on all EFCO series doors except Series D202 narrow ThermaStile™ door

Finish

- Standard clear anodize and standard bronze anodize

Express Note: 4¼" tall midrail only

CONCEALED VERTICAL ROD TOUCH BAR PANIC

Features

- Concealed vertical rod's low-profile touch-bar panic exit device meets rigorous demands of high-traffic entrances
- Slim-line device projects less than 3" from face of door
- Mechanism runs full width of door and operates in comfortable single direction movement
- Both top and bottom locking rods completely concealed in door stile
- Hardened-steel latches and adjustable strike assure safety, security, and quiet operation
- Depressing crash bar releases bottom bolt and top latch permitting egress
- Upon closing, top latch re-engages strike securely and frees bottom bolt to engage threshold and lock door from exterior
- Panic can be deactivated (dogged down) with ¼ turn of allen screw in touch bar (cylinder dogging feature is available upon request)
- Standard rim type cylinder
- UL 305 listed
- Conforms to ANSI/BHMA 156.3 GRADE 1, TYPE 6, FUNCTIONS 01 through 04

Application

- Can be used on all EFCO series single and pairs of doors in areas of high and abusive traffic

Finish

- Standard clear anodize and standard bronze anodize





EFCO Standard Hardware

PANICS HARDWARE

PANICS



RIM TOUCH BAR PANIC

Features

- All-steel drive mechanism and concealed fasteners
- Latch bolt in rim of touch-bar housing, engaging adjustable roller strike, provides locking action
- Depressing touch bar unlocks device and permits egress
- Bolt re-engages strike and locks when door is closed
- Can be deactivated (dogged down) with ¼ turn of allen screw in touch bar
- If key cylinder is required
- Standard rim cylinder
- UL 305 listed
- Conforms to ANSI/BHMA 156.3 GRADE 1, TYPE 4, FUNCTIONS 01 through 04

Application

- Can be used on all EFCO series doors in areas of high and abusive traffic; for pairs of doors, removable mullion with integral mortised strikes is required.

Finish

- Standard clear anodize and standard bronze anodize



REMOVABLE MULLION

Features

- Top and bottom mounting brackets
- Adjustable mortised strikes
- Security clips guard against door being pried away from mullion

Application

- For use on pairs of doors 7' to 10' tall with touch bar rim panics
- For use on pairs of doors 7' to 10' tall with crash bar rim panics

Finish

- Standard clear anodize and standard bronze anodize



RIM LOCK CYLINDER

Features

- Standard 1½" diameter rim cylinder with five pins
- Standard low-profile cylinder ring and adaptor plate
- Cylinder is key operated and furnished with Schlage "C" keyway
- Standard 1¼" long breakaway spindle and 1-7/8" long breakaway mounting screws

Application

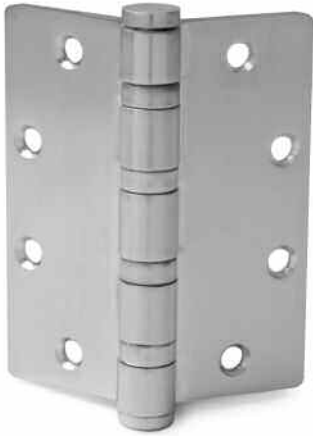
- For use with all panic devices

Finish

- Cylinder face available in either anodized satin aluminum or bronze; core face has US26D finish

EFCO Standard Hardware

HINGING HARDWARE



BUTT HINGE (1 1/4" Doors)

Features

- 4 1/2" x 4" fully mortised brass hinge with .134" thick leaf
- Five knuckles
- Two ball bearings
- Nonrising pin with button tip
- Standard 1/16" swage
- 5/32" radiused corners
- Nonremovable pins available
- Fully mortised into door hinge stile and frame hinge jamb
- 1/4" thick reinforcing plates used in both frame and door for secure screw anchorage
- Conforms to ANSI/BHMA 156.1 GRADE 2, A2112

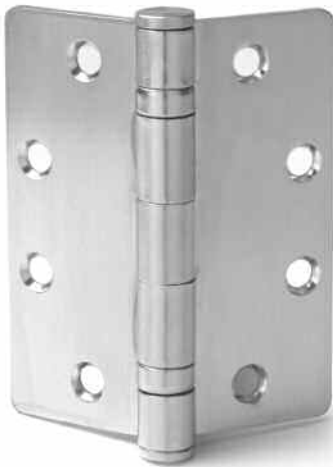
Application

- Standard hinge used on all EFCO 1 1/4" thick doors (Series D200 narrow, D300 medium, and D500 wide stile); use of intermediate butt (1 1/2 pairs per leaf) recommended for doors over 7'6" tall or for doors in heavy-traffic areas

Finish

- US26D satin chrome and dark bronze

Note: Not available on ThermaStile doors



BUTT HINGE (Standard on 2" DuraStile Doors)

Features

- 5" x 4 1/2" fully mortised brass hinge with .190" thick leaf
- Five knuckles
- Four stainless steel ball bearings and raceways
- Nonrising pin with button tip
- Standard 1/16" swage
- 5/32" radiused corners
- Nonremovable pins available
- Fully mortised into door hinge stile and frame hinge jamb
- 1/4" thick reinforcing plates used in both frame and door for secure screw anchorage
- Conforms to ANSI/BHMA 156.1 GRADE 1, A2111

Application

- Standard hinge used on EFCO DuraStile 2" thick doors (Series D318 medium and D518 wide stile).

Finish

- US26D satin chrome and dark bronze

Note: Not available on ThermaStile series doors, Express Note: Available only on Series D318 DuraStile door



3/4" OFFSET PIVOT SET

Features

- Handed pivot set
- Cast aluminum frame and door portions
- Oilite bronze bushing in top frame portion
- Case-hardened spring-loaded pin in top door portion
- Bottom door portion utilizes full race ball bearing
- Case-hardened stud in floor/jamb portion with 1/8" vertical adjustment

Application

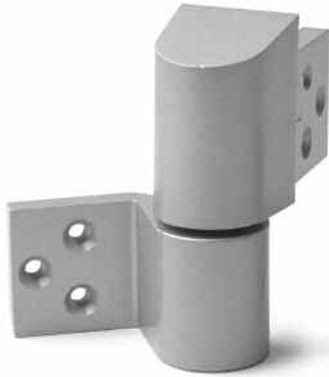
- Can be used on Series D200, D300, and D500 doors up to 125 pounds

Finish

- Baked satin aluminum paint and baked storefront bronze paint

EFCO Standard Hardware

HINGING HARDWARE



3/4" OFFSET INTERMEDIATE PIVOT

Features

- Handed pivot
- Precision aluminum extrusion
- Full race ball bearing backed by oilite bronze bushing in door portion
- Case-hardened pin in jamb portion fully retractable for ease of installation

Application

- Use in conjunction with standard pivot set for doors in high-traffic areas or on doors over 7'6" tall

Finish

- Standard clear anodize and standard bronze anodize



OFFSET PIVOT (GRADE 1) (Standard on 2" DuraStile Doors)

Features

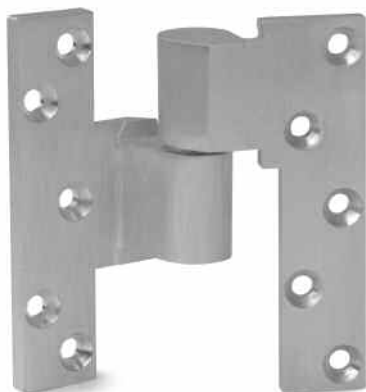
- 3/4" offset heavy-duty fully mortised handed pivot set
- Accommodates doors up to 450 pounds
- Bottom pivot utilizes sealed ball bearing raceway and mortised into side jamb
- Top offset pivot utilizes hardened ground-stud and oil-impregnated sintered bronze bearings
- After installation, accommodates 3/16" vertical adjustment
- Conforms to ANSI/BHMA 156.4 TYPE C07131

Application

- Standard offset pivot set used on all heavy-duty DuraStile and thermally broken ThermaStile doors; optional for EFCO standard doors; recommended in heavy-traffic areas

Finish

- US26D satin chrome plated and US10B satin oxidized bronze
- Express Note: Available only on Series D318 DuraStile door



INTERMEDIATE OFFSET PIVOT (GRADE 1) (Standard on 2" DuraStile Doors)

Features

- Handed pivot
- Fully mortised into door stile and pivot jamb
- Non-ferrous-based material with hardened ground-stud and oil-impregnated sintered bronze bearings
- After installation, accommodates 3/16" vertical adjustment
- Conforms to ANSI/BHMA 156.4 TYPE C07321

Application

- Standard on all heavy-duty DuraStile doors and thermally broken ThermaStile doors; optional for all other EFCO doors; pivot used in conjunction with top & bottom heavy-duty pivot set; recommended for doors in high-traffic areas or on doors over 7'6" tall

Finish

- US26D satin chrome plated and US10B satin oxidized bronze
- Express Note: Available only on Series D318 DuraStile door

EFCO Standard Hardware

HINGING HARDWARE



CONTINUOUS GEARED HINGE

Features

- Fully mortised hinge gives full-length door height support
- Pinless assembly of three interlocking 6063-T6 aluminum extrusions with chemically lubricated polyacetal thrust bearings
- 410 stainless steel self-drilling fasteners
- All conventional overhead surface-mounted or concealed sliding-arm overhead closers may be used

Application:

- Use on all EFCO series doors from 1 $\frac{3}{4}$ " to 2 $\frac{1}{4}$ " thick and weighing up to 450 pounds

Finish:

- 204R1 clear anodize, 7 mil dark bronze anodize, and standard paint

Express Finish:

- 204RI clear anodize or 7 mil dark bronze anodize only

Express Note: Available on standard and Series D318 DuraStile doors only



CONCEALED OVERHEAD CLOSER

- Double-acting non-handed closer
- Built-in positive backstop at 90° or 105°, trim permitting
- Hold-open positions at 90° or 105° combined with mechanical backstop available
- Closing and latching speeds controlled by separate regulating valves and are fully adjustable after installation
- Conceals in aluminum header or transom bar as small as 1 3/4" x 4" x 1/2"
- Positive centering for alignment
- Holds door closed against normal wind or draft
- Secondary wall, floor, or overhead stop recommended to control opening of door
- Bottom center pivot set includes both floor and threshold mountings
- ADA (handicap) option available
- ADA (handicap) option meets 8.5 lb maximum opening force requirement with a maximum door width of 3 feet
- Can be used with either center pivots, butt hinges, offset pivots, or continuous geared hinge
- UL listed

Application

Use on all EFCO series exterior doors up to 3'-6" wide and weighing up to 250 pounds and all EFCO interior doors up to 4' wide and weighing up to 250 pounds; supplemental door stop required on header when used on center-hung, single-acting door

Note: Auxiliary door stop is highly recommended

Finish

Center Pivot – No finish option because closer body and arm are completely hidden by header or transom bar; Butt Hinges and Offset Pivots – Offset arm (only exposed part) available in baked satin aluminum paint or baked storefront bronze paint



SURFACE-MOUNTED CLOSER

Features

- Traditional style commercial door control
- Simple installation
- Non-handed
- Closer is shipped with ARP Tri-pak. Allows for top jamb, regular arm, and parallel arm mounting
- Adjustable spring power from sizes 3 to 6
- Standard mounting hole pattern
- Manufacturer [25] year warranty

Application

Can be used on EFCO standard entrance systems

Finish

Sprayed aluminum or dark duranodic bronze